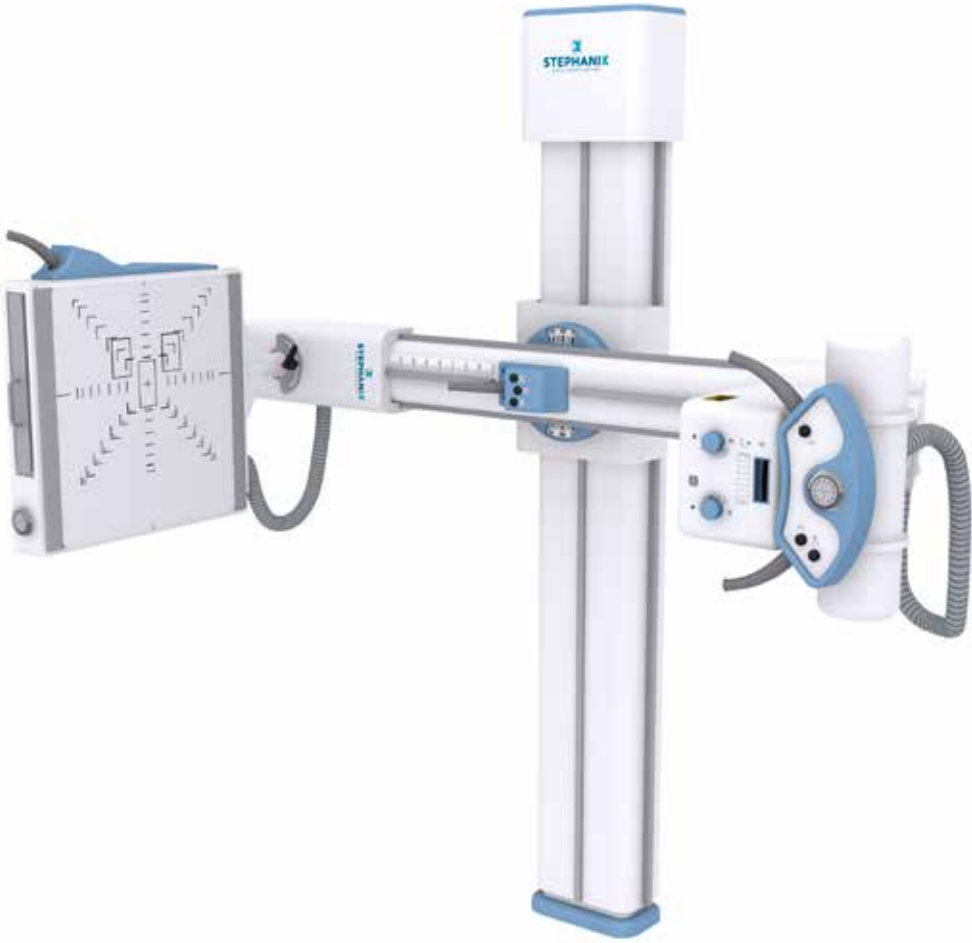


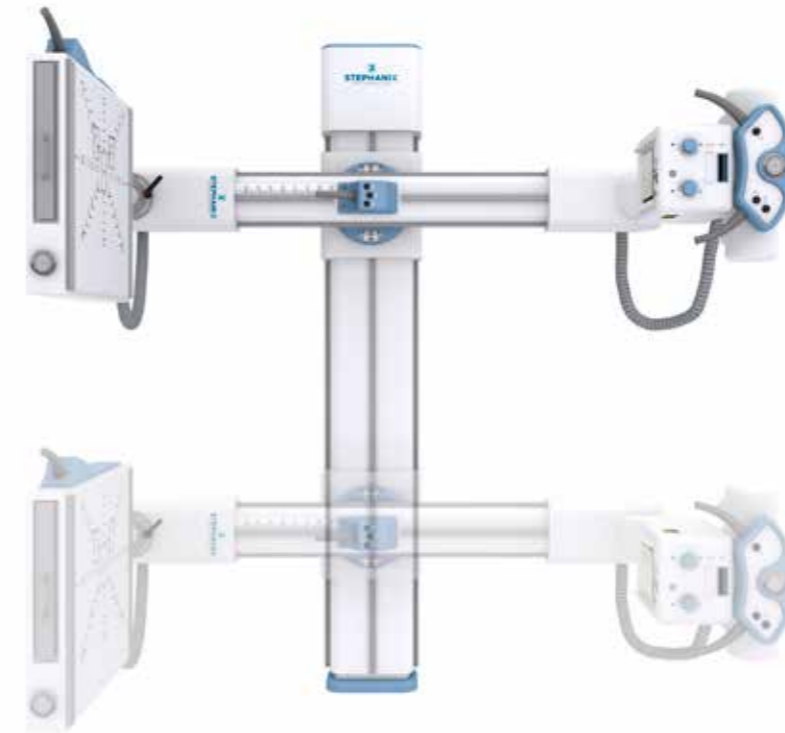
# STATIF DREAM



**STEPHANIX**  
MEDICAL IMAGING SOLUTIONS

STATIF DReam is a versatile RAD room to perform X-rays from head to toes.

The exposures can be made directly on the swiveling Bucky, but also on a stretcher or wheelchair.



**COMFORT OF USE**

All movements of the U-arm are manual.

One touch of the control keys is required for linear and rotational movements.

The Bucky-Tube assembly has a vertical displacement of 114 cm to explore the entire skeleton.

The +/-135° rotation of the arm from its vertical position 0°, with mechanical stop each 5° gives the possibility to choose any angulation.

**EXAMINATION TABLES (OPTIONS)**

STATIF DReam can be equipped with an optional patient table (elevating or fixed) in order to make possible the majority of horizontal exposures for patients in bed or polytraumatized.



## POSITIONS OF REFERENCE

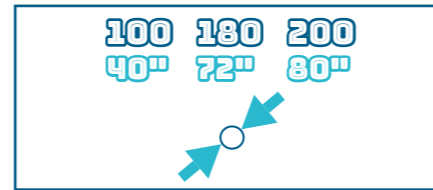
Table and Chest are predefined positions on **Statif DReam**.

The Table detent indicator is lit when the unit reaches the suitable position to place a mobile table just over the Bucky. SID set at 100cm and arm in vertical position.

The focal distance (SID) is variable continuously from 100 to 200 cm; each of the three light indicators illuminates when specific position is reached (100cm, 180cm, 200cm), intermediate values are also available.

Motorized movements in option are:

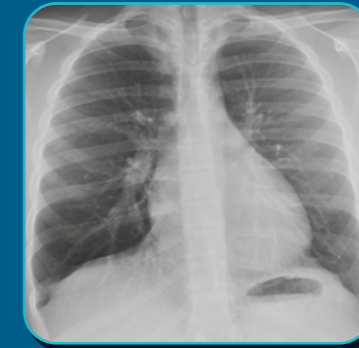
- ▶ SID
- ▶ Tube positioning
- ▶ Arm positioning



## CONTROL CONSOLE

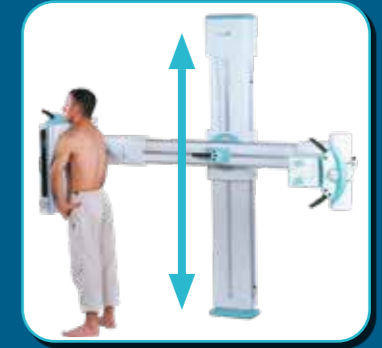
The control console consists of keys with symbols corresponding to the different available movements.

The display shows the selected SID value, inclinometers indicate the angles of the arm, the tube and the Bucky.



### FOCAL DISTANCE

Focal distance variable from 100 to 200 cm to perform chest exams.



### VERTICAL MOVEMENT

Vertical movement of the Bucky/tube assembly for carrying out all the radiographic examinations.



### ROTATIONS

+/- 180° rotation of the tube for direct projections (weight bearing exams).



### POSITIONS OF REFERENCE

Chest and Table positions of reference with dedicated indicators.



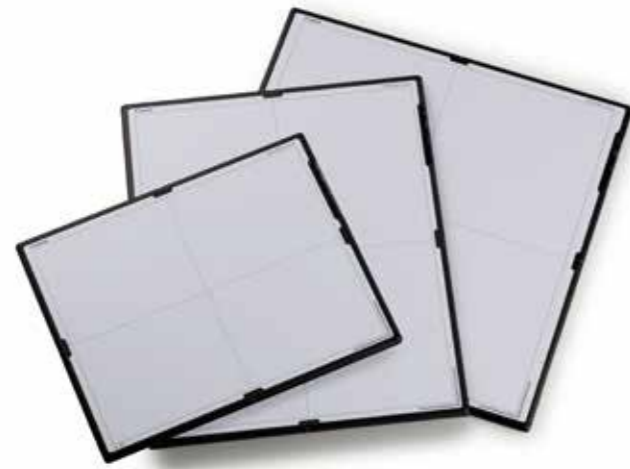
### CUSTOMIZED IMPLEMENTATION

Choice of presentation of the Bucky on the left (standard) or on the right (specify when ordering) depending on the installation of the unit in the room.



### DIGITAL DR

Flat panel technology with real time control of image quality.



### FLAT PANEL DETECTORS

The flat panel detectors, integrated wired or wireless, are designed for exams such as chest, extremities, abdomen and spine.

WiFi detectors thickness is equivalent to CR cassettes and enables specific procedures such as femoro-patellar and weight bearing feet.

Their sharing, between several rooms and mobile systems, permits all routine procedures.

### ACQUISITION

For digital versions with flat panel technology, a console with touch screen interface (option) gives access to the patient data entries, the selection of anatomical protocols and acquisition parameters, the image preview for validation, and its post-processing before sending it to the network.

For information sharing, Statif DReam systems are equipped with:

- ▶ USB ports
- ▶ Ethernet outputs
- ▶ DICOM MEDIA Export compatibility.



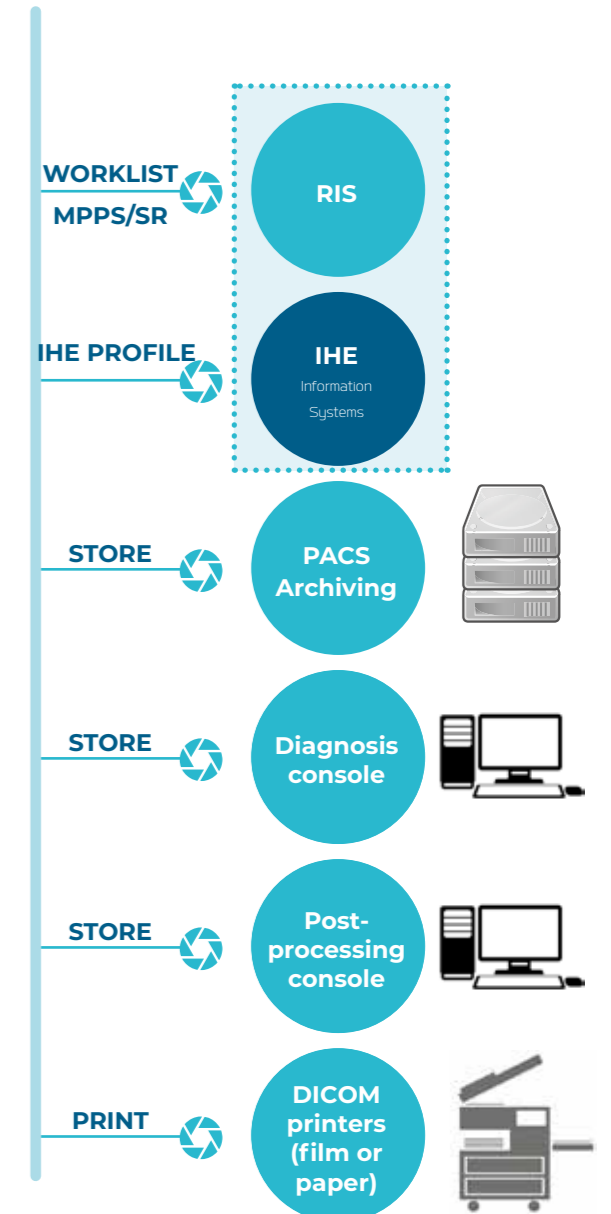
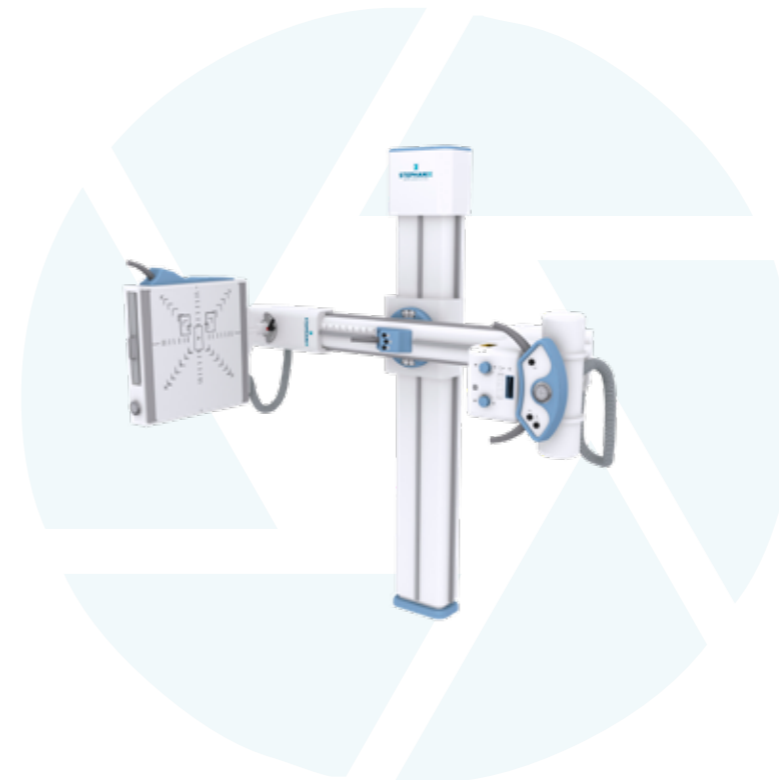
### WORKSTATIONS

Depending on your Department configuration, STEPHANIX can offer a selection of workstations for display and secondary processing with Statif DReam.

STEPHANIX solutions manage the patient data, from image acquisition to diagnosis, and storage on the network.



## DX MODALITY



**DICOM**  
IT ARCHITECTURE GIVEN AS AN EXAMPLE



# LATEST GENERATION OF DIGITAL RADIOGRAPHY SOLUTIONS: INTEGRATED, DYNAMIC, PORTABLE, WIRED AND WIRELESS DETECTORS.

**D2RS**  
Dynamic Imaging



**XTREME**  
General X-Ray Rooms



**MOVIX SERIES DREAM**  
Mobile X-ray units



**OMNISCOPE DREAM-S**  
Surgical C-arms



**STEPHANIX**  
MEDICAL IMAGING SOLUTIONS

Head office : 10, rue Jean Moulin  
Z.I. du Bayon - 42150 La Ricamarie - FRANCE  
Tel. +33 4 77 47 81 60 - Fax: +33 4 77 37 55 19  
export@stephanix.com

[www.stephanix.com](http://www.stephanix.com)